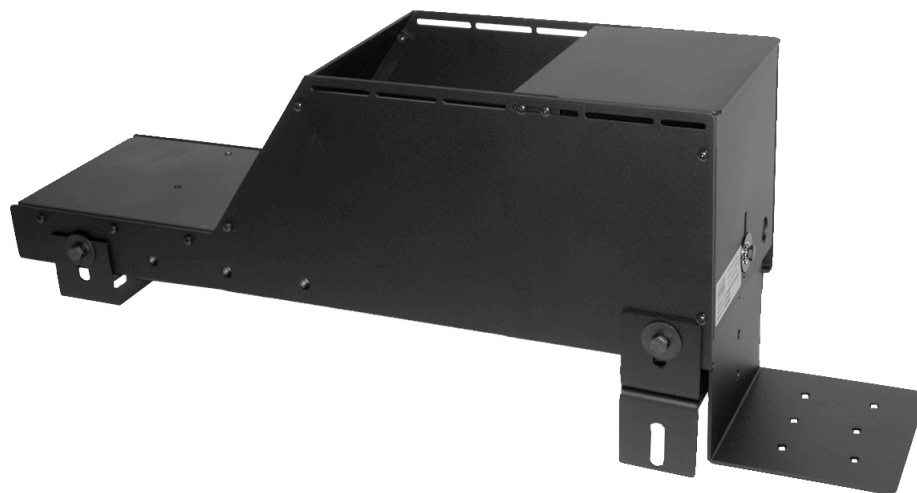




303 MESSNER DR. • WHEELING, IL • 60090
847-459-1460 • FAX 847-459-1569
WWW.LUND-INDUSTRIES.COM

EXPCMT Ford Explorer Console Mounting Kit



1. Remove the factory console.
2. Mount the single bale bracket to the front vehicle mounting pems in the vehicle floor. These pems held the factory console in place.
3. Use the double bale bracket stack for the rear of the mount. Bolt to factory bracket using washers to shim 1/4" gap on each side.
4. Set The Lund console in position and align with front bracket. Mark holes for the rear bracket stack and drill 13/32" holes and install pems.
5. Install the rear "L" bracket. The rear "L" is for appearance only and does not need to be secured to the vehicle floor.