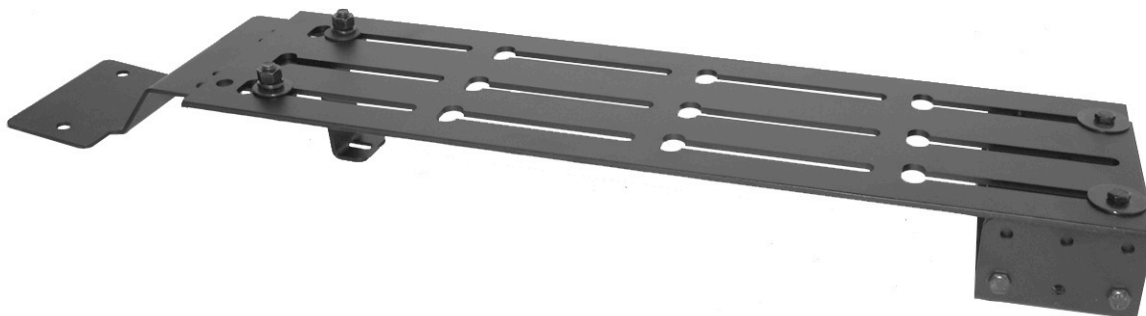




303 MESSNER DR. • WHEELING, IL • 60090
 847-459-1460 • FAX 847-459-1569
 WWW.LUND-INDUSTRIES.COM



Installation Instructions for DC-BASE 2006 Dodge Charger Base Plate and Mounting Feet

1. Remove factory mounted base plate and brackets.
2. Install Lund front bracket using the (3) factory studs and nuts.
3. Install Lund rear bracket assembly using (2) factory bolts. The top half of the rear assembly can be offset to any of the side holes of the bottom half to allow for proper positioning of the rear bale bracket.
Optional: (2) 3/4" sheet metal screws can be added through the back slots of the rear bracket for extra strength. *Be sure to install theses in line with the factory bolts to ensure that they only go through the upper sheet metal, not through to the outside of the vehicle.*
4. Position the base plate onto the mounting brackets and attach with the hardware supplied: (2) 3/8" x 3/4" bolts, flat washers, lock washers and lock nuts in front.
 (2) 1/4" x 3/4" bolts, fender washers, star washers and nylok nuts in back.